

Page A Day

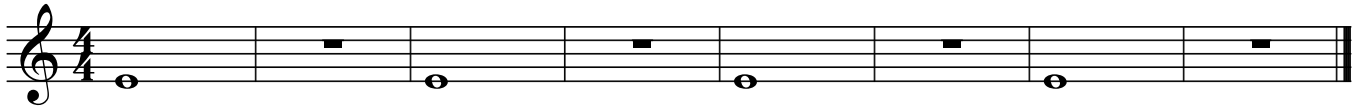
Syllable = _____



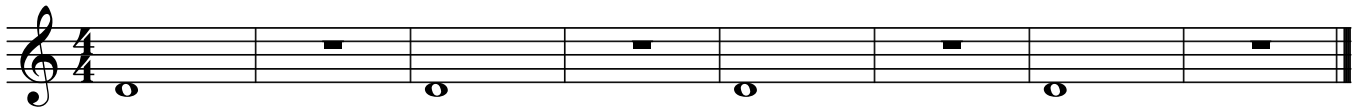
Syllable = _____



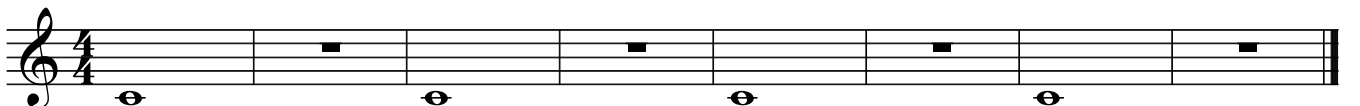
Syllable = _____



Syllable = _____



Syllable = _____

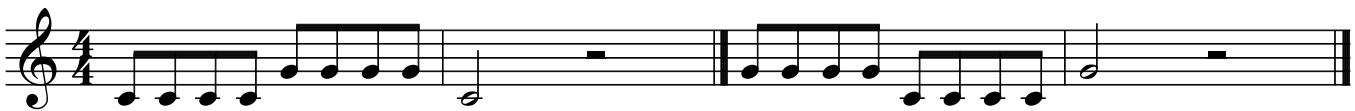
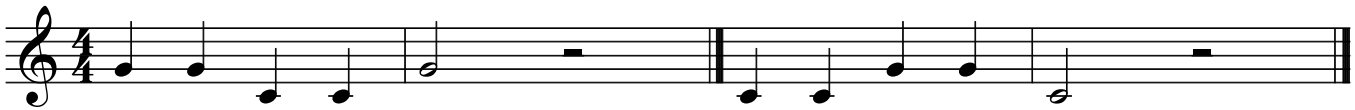
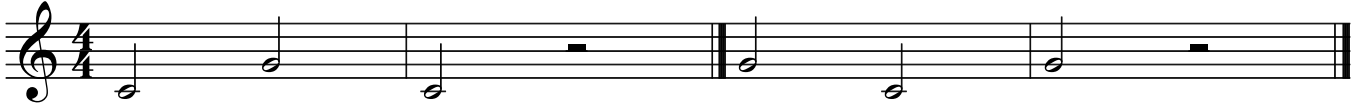
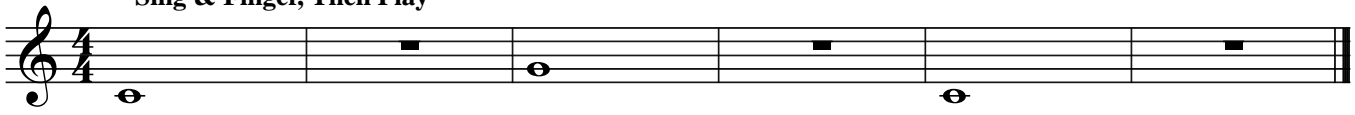


4/**4** = _____ Top # = _____ per _____
 Bottom # = _____ of note gets a _____

o = _____ **-** = _____
 They get _____ counts.

_____ = _____ **||** = _____ (_____)

Sing & Finger, Then Play



 = _____

"Check yourself" →

Feet _____

 = _____

Bottom _____

They get _____ counts.

Eyes _____

If you are not playing, your instrument should be in the _____ position.

Going Down The Scale



"Breathing Is Everything!"



' = *Breath Mark - Take a breath through the corners of your mouth.*

Legato = Long, Smooth & Connected.



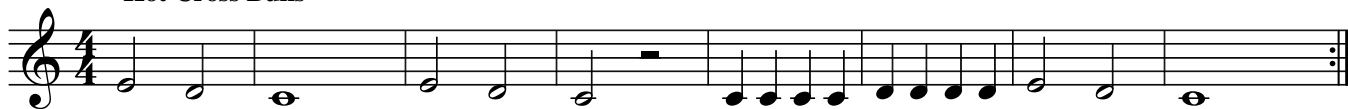
Use 5 count air to keep the notes constantly sounding.

Staccato = Shorter & Separated.



Be careful not to play too shortly.

Hot Cross Buns



Try playing both staccato & legato.

Repeat sign



They get ____ count.

— = L _____ (L _____)

"Breathing ____"

. = S _____ (S _____)

Quarter Note Trios



How many count air should you use?

How many count air here?

Quarter Note Trios With Space



Each note should bounce like a ball.

Stepping Down By Twos



Keep your air moving forward to the release.

Stepping Down By Ones



Use quick fingers when changing notes.

Harmonized Halves



Some players should play the top notes while others play the bottom notes.

Elements of Music

Melody = _____

Style = _____

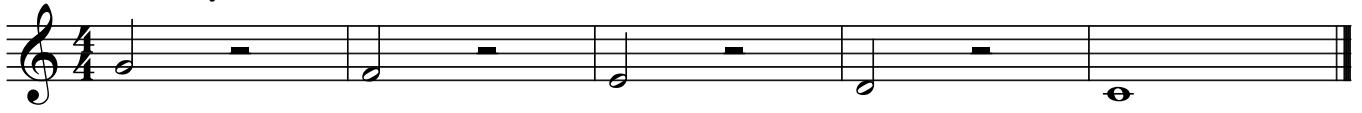
Harmony = _____

Form = _____

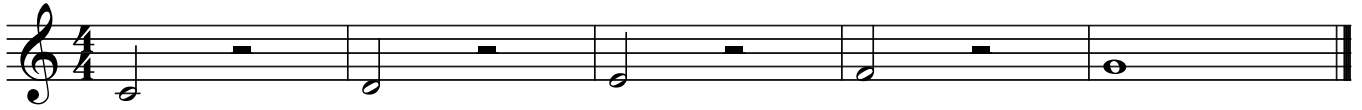
Rhythm = _____

Expression = _____

Halfway Down The Scale



Inversion = Upside Down



Down & Up



Six Using 15



Cardiff By The Sea



A _____ is complete musical idea. It is played in one _____.

_____ = Tone Color. It is the unique way something sounds.

We always want to have a beautiful sound on our instrument. List 3 adjectives describing correct tone color.

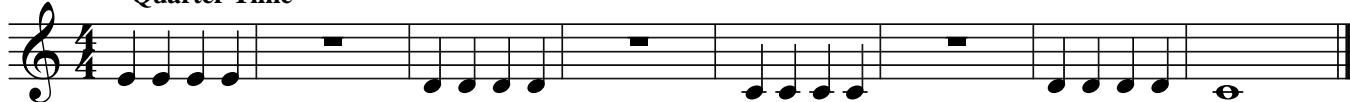
Three Halves



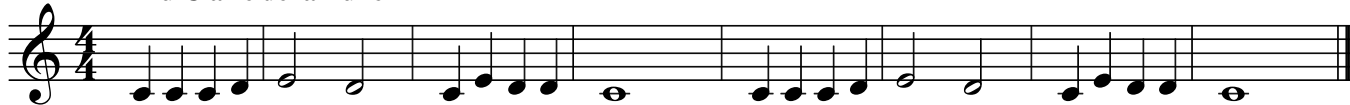
Twisted Up



Quarter Time



Au Claire de la Lune



Down By The Station



The _____ is the steady clocklike pulse of a song.

The _____ is the speed of the _____.

_____ = fast _____ = gradually speed up

_____ = medium

_____ = slow _____ = gradually slow down

Fun With Fa



More Fun With Fa



Fun With Sol



More Fun With Sol



A tie is a curved line that connects notes of the same pitch. They are played as one note.

Sol What?

A dot after a note or rest adds 1/2 the value.

2 Pick one note to play.



1 measure repeat

2 measure repeat

∴ = _____

♩ = _____

♩. = _____

♩ = _____

. = next to a note _____ the value.

They get _____ a count.



= _____ - a curved line that connects notes of the same pitch.

They are played as one _____ note.

Long Tone

"Lung Buster" - Down The Scale In Just One Breath

How many count air should you use?

Lightly Row

= _____ It means to _____ the note or rest longer.

The melody can move by _____, _____, _____.

_____ = beginning of a note.

_____ = middle of a note.

_____ = end of a note.

_____ = music with 2 parts or players.

Sequence #2



Good King Wenceslas



Song of the Fjords



Unfinished Melody



Notate an ending for this song. Make sure you can play what you write.

Scale Fun



Patterns in Music

- _____ = move up or down by step.
- _____ = move up or down by skip.
- _____ = play a passage again.
- _____ = repeat a melody starting on a different note.
- _____ = play flipped or upside down.
- _____ = play backwards.
- _____ = play backwards & flipped.

Fit To Be Tied



Ties & Slurs

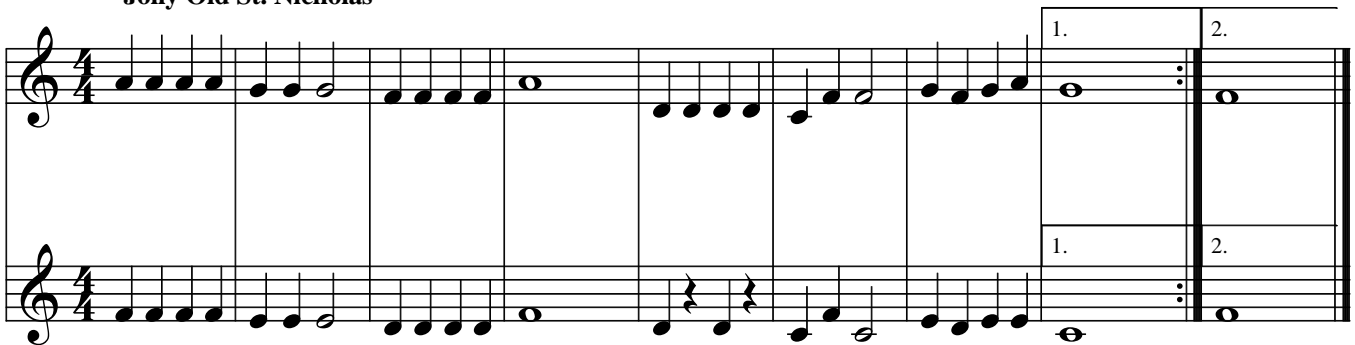


Add The Dot



Jolly Old St. Nicholas

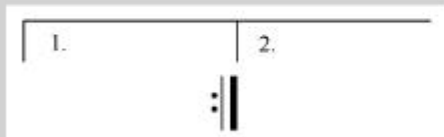
First & second endings



Clarinet players should _____ their first finger when playing "La" (A).

Brass players change _____ to play on different _____.

Your should change notes _____ even when the music moves slowly.



= first & second _____.

You _____ the first ending on the repeat, and play the _____ ending instead.

Lung Buster #2



A phrase is shown by a curved line over several notes. Phrases should be played in one breath.

Roller Coaster Ride



Old MacDonald's Farm



Fine



D.S. al Fine

_____ are shown by a curved line over several notes. They are to be played as one idea in one breath.

_____ = The end of a piece of music.

D.S. al Fine = _____ to the _____, then play to the _____.

§ = _____

Eighth Note Patterns 3 & 4



Jim Along Josie



No Strings Attached

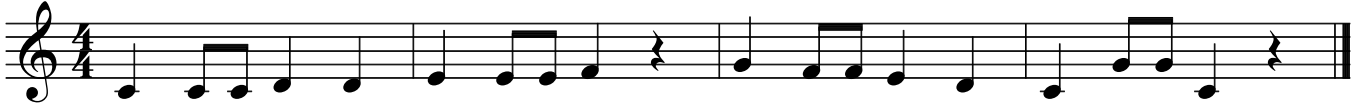


Student Composition

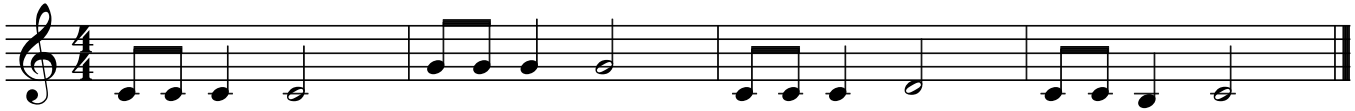
Notate and play a melody using eighth notes on counts 3 & 4. Be sure to include barlines, time signature and the correct clef for your instrument.

Two sets of blank musical staves, each consisting of five lines, for student composition.

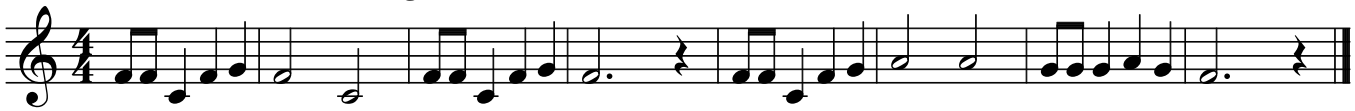
Eighth Note Patterns 2 & 1



Skip To My Lou

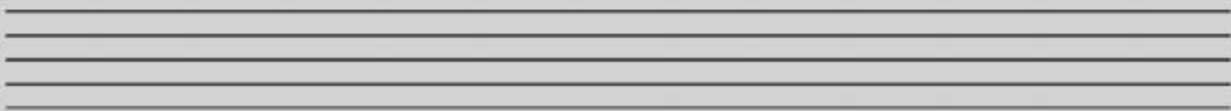


Mexican Mountain Song



Student Composition

Notate and play a melody using eighth notes on counts 2 & 1. Be sure to include barlines, time signature and the correct clef for your instrument.



Twinkle, Twinkle Little Star



Ode To Joy



Twinkle, Twinkle Little Star was composed by _____ at age 3.

He composed music during the _____ period.

It has an _____ form.

Ode to Joy was composed by _____.

It was used by _____ as the theme to his Symphony No. 9.

He was a transitional composer between the _____ and _____ period.

It has an _____ form.