

Page A Day

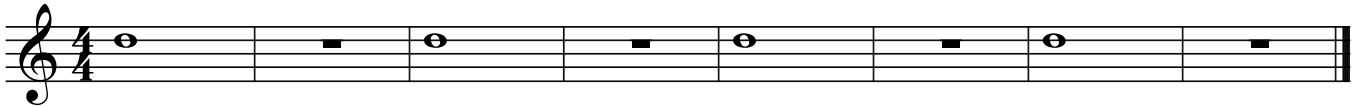
Syllable = _____



Syllable = _____



Syllable = _____



Syllable = _____



Syllable = _____

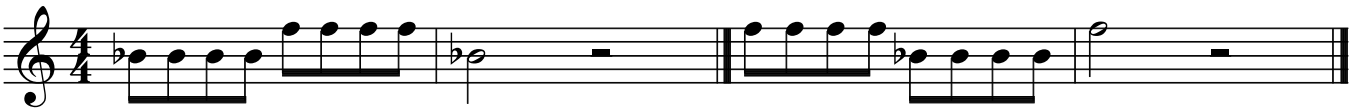
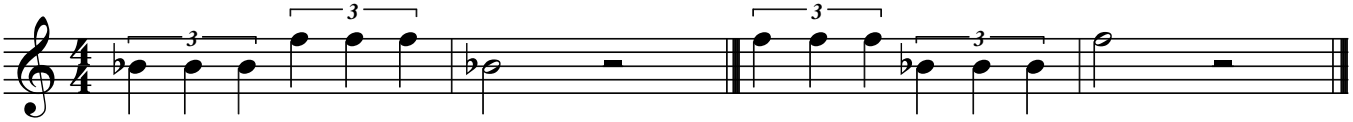
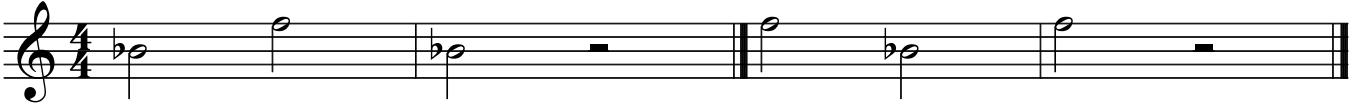


4/**4** = _____ Top # = _____ per _____
 Bottom # = _____ of note gets a _____

o = _____ **-** = _____
 They get _____ counts.

_____ = _____ **||** = _____ (_____)

Sing & Finger, Then Play



 = _____

"Check yourself" →

Feet _____

 = _____

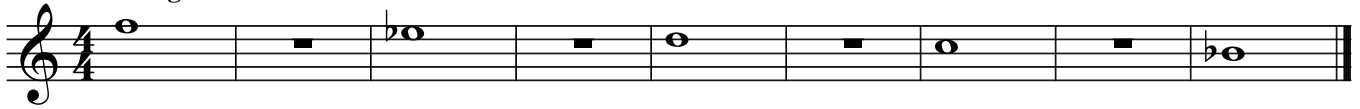
Bottom _____

They get _____ counts.

Eyes _____

If you are not playing, your instrument should be in the _____ position.

Going Down The Scale



"Breathing Is Everything!"



' = *Breath Mark - Take a breath through the corners of your mouth.*

Legato = Long, Smooth & Connected.



Use 5 count air to keep the notes constantly sounding.

Staccato = Shorter & Separated.



Be careful not to play too shortly.

Hot Cross Buns



Try playing both staccato & legato.

Repeat sign



They get ____ count.

— = L _____ (L _____)

"Breathing ____"

. = S _____ (S _____)

Quarter Note Trios



How many count air should you use?

How many count air here?

Quarter Note Trios With Space



Each note should bounce like a ball.

Stepping Down By Twos



Keep your air moving forward to the release.

Stepping Down By Ones



Use quick fingers when changing notes.

Harmonized Halves



Some players should play the top notes while others play the bottom notes.

Elements of Music

Melody = _____

Style = _____

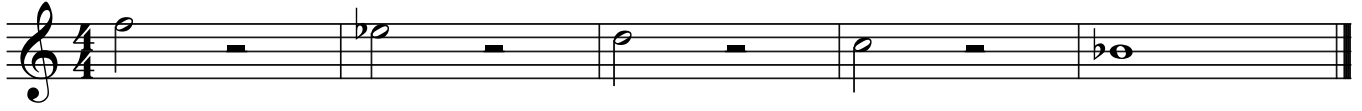
Harmony = _____

Form = _____

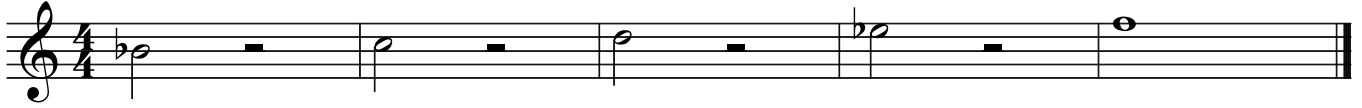
Rhythm = _____

Expression = _____

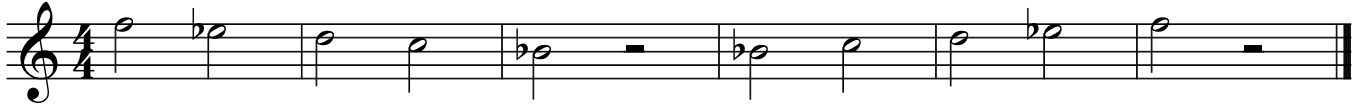
Halfway Down The Scale



Inversion = Upside Down



Down & Up



Six Using 15



Cardiff By The Sea



A _____ is complete musical idea. It is played in one _____.

_____ = Tone Color. It is the unique way something sounds.

We always want to have a beautiful sound on our instrument. List 3 adjectives describing correct tone color.

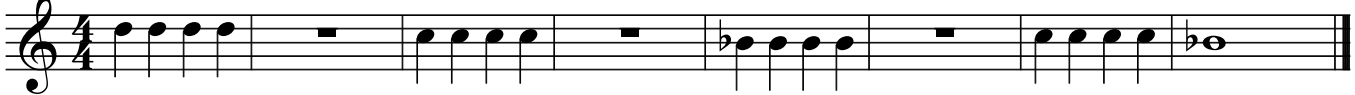
Three Halves



Twisted Up



Quarter Time



Au Claire de la Lune



Down By The Station



The _____ is the steady clocklike pulse of a song.

The _____ is the speed of the _____.

_____ = fast _____ = gradually speed up

_____ = medium

_____ = slow _____ = gradually slow down

Fun With Fa



More Fun With Fa



Fun With Sol



More Fun With Sol



A tie is a curved line that connects notes of the same pitch. They are played as one note.

Sol What?

A dot after a note or rest adds 1/2 the value.



1 measure repeat

2 measure repeat

Pick one note to play.

∴ = _____

♪ = _____

♩ = _____

♩ = _____

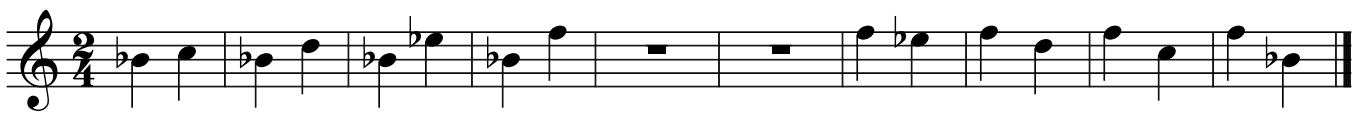
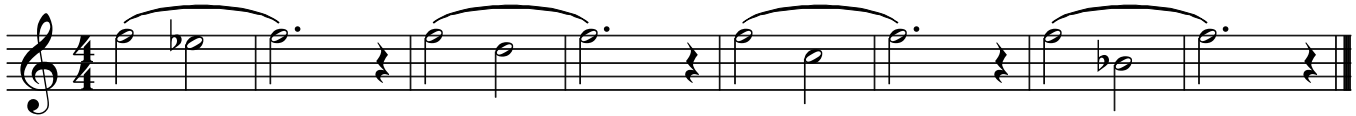
. = next to a note _____ the value.

They get _____ a count.

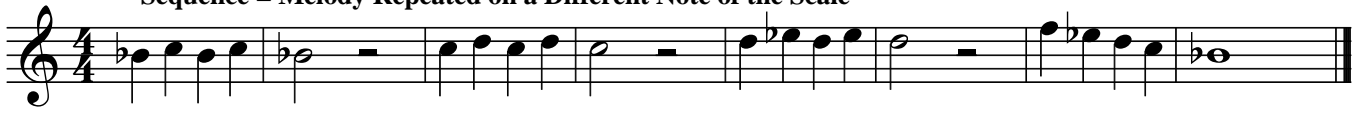


= _____ - a curved line that connects notes of the same pitch.

They are played as one _____ note.





Sequence = Melody Repeated on a Different Note of the Scale





Mary Had A Little Lamb



 = _____ . It gets _____ counts.

 = 2 _____ per _____ .

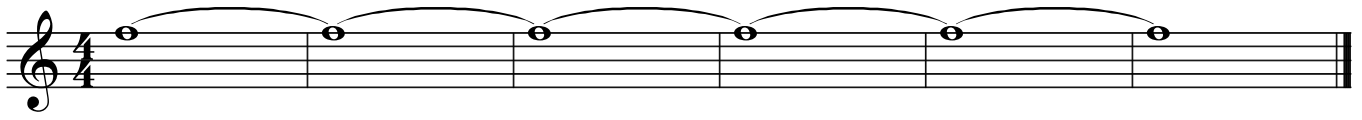
 = _____ notes get 1 beat.

 = _____ - a curved line that connects notes of different pitches.

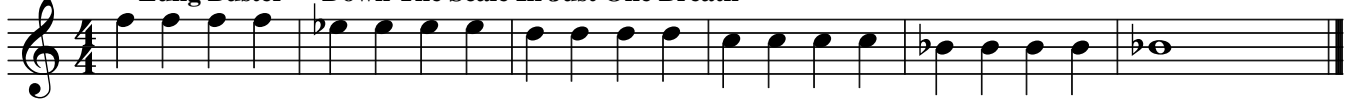
They are played without _____ .

_____ = a melody repeated on a different note of the scale.

Long Tone



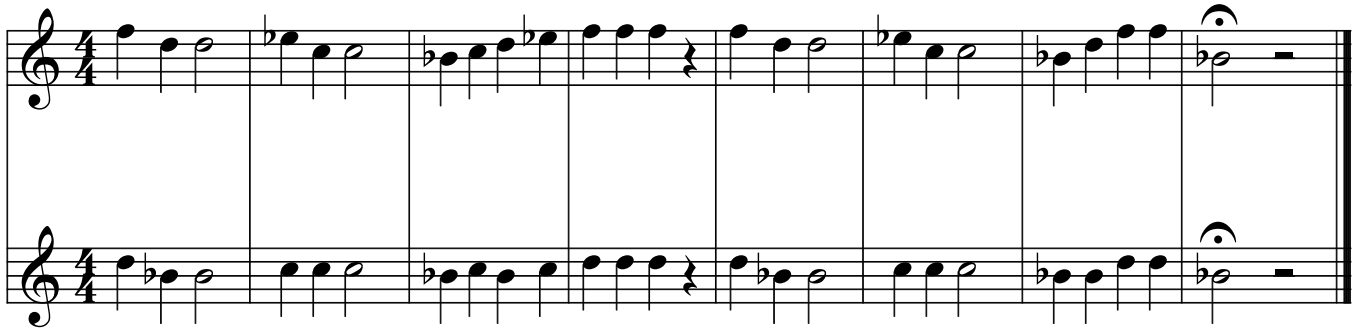
"Lung Buster" - Down The Scale In Just One Breath




How many count air should you use?



Lightly Row



 = _____ It means to _____ the note or rest longer.

The melody can move by _____, _____, _____.

_____ = beginning of a note.

_____ = middle of a note.

_____ = end of a note.

_____ = music with 2 parts or players.

Sequence #2



Good King Wenceslas



Song of the Fjords

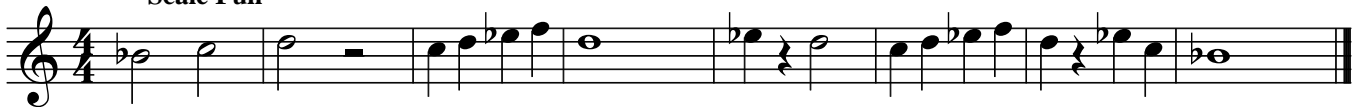


Unfinished Melody



Notate an ending for this song. Make sure you can play what you write.

Scale Fun



Patterns in Music

- _____ = move up or down by step.
- _____ = move up or down by skip.
- _____ = play a passage again.
- _____ = repeat a melody starting on a different note.
- _____ = play flipped or upside down.
- _____ = play backwards.
- _____ = play backwards & flipped.

Syllable = _____



Stepping Up To La

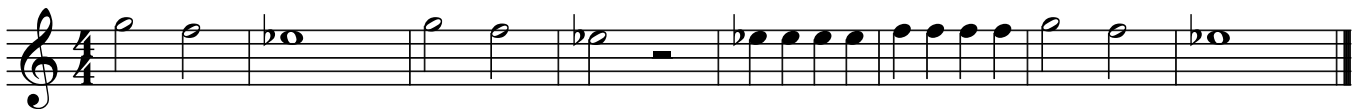


Down A _____

Speed Bump



Hot Cross Buns Revisited



Instrument Families

_____ instruments use the lips to vibrate air.

_____ instruments use a reed or an edge to vibrate air.

_____ instruments are struck or hit to vibrate air.

_____ instruments use a plucked or bowed wire to vibrate air.

Fit To Be Tied

A single staff of music in 4/4 time. It features a sequence of quarter notes: G4, A4, B4, C5, followed by a quarter rest. This pattern repeats four times, with a slur connecting the notes of each measure.

Ties & Slurs

A single staff of music in 4/4 time. It features a sequence of quarter notes: G4, A4, B4, C5, followed by a quarter rest. This pattern repeats four times, with a slur connecting the notes of each measure. The notes in the second and third measures are tied to the notes in the first and second measures of the following measure.

Add The Dot

A single staff of music in 4/4 time. It features a sequence of quarter notes: G4, A4, B4, C5, followed by a quarter rest. This pattern repeats four times, with a slur connecting the notes of each measure. The notes in the second and third measures are tied to the notes in the first and second measures of the following measure.

Jolly Old St. Nicholas

First & second endings

Two staves of music in 4/4 time. The top staff contains a sequence of eighth notes: G4, A4, B4, C5, followed by a quarter rest. This pattern repeats four times, with a slur connecting the notes of each measure. The notes in the second and third measures are tied to the notes in the first and second measures of the following measure. The bottom staff contains a sequence of eighth notes: G4, A4, B4, C5, followed by a quarter rest. This pattern repeats four times, with a slur connecting the notes of each measure. The notes in the second and third measures are tied to the notes in the first and second measures of the following measure. The piece concludes with a first ending (marked '1.') and a second ending (marked '2.').

Clarinet players should _____ their first finger when playing "La" (A).

Brass players change _____ to play on different _____.

Your should change notes _____ even when the music moves slowly.

A diagram showing two musical staves. The first staff has a first ending (marked '1.') and a second ending (marked '2.'). The second staff has a first ending (marked '1.') and a second ending (marked '2.'). The first ending is followed by a repeat sign (two dots and a vertical bar) and the second ending is followed by a double bar line.

= first & second _____.

You _____ the first ending on the repeat, and play the _____ ending instead.

Lung Buster #2

A phrase is shown by a curved line over several notes. Phrases should be played in one breath.

Roller Coaster Ride

Old MacDonald's Farm

§

Fine

D.S. al Fine

_____ are shown by a curved line over several notes. They are to be played as one idea in one breath.

_____ = The end of a piece of music.

D.S. al Fine = _____ to the _____, then play to the _____.

§ = _____

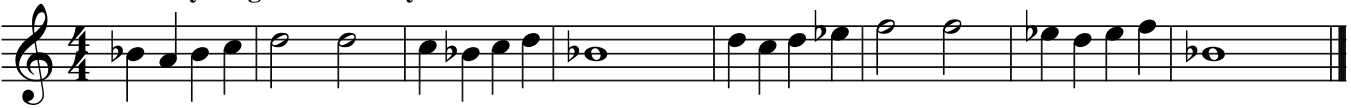
Syllable = _____



Riding The Wave



Sweetly Sings The Donkey



Crusader's March



The Shark



Dynamics = _____

= _____ (gradually get _____)

= _____ (gradually get _____)

pp = _____

mf = _____

p = _____

f = _____

mp = _____

ff = _____

Eighth Note Patterns 3 & 4



Jim Along Josie

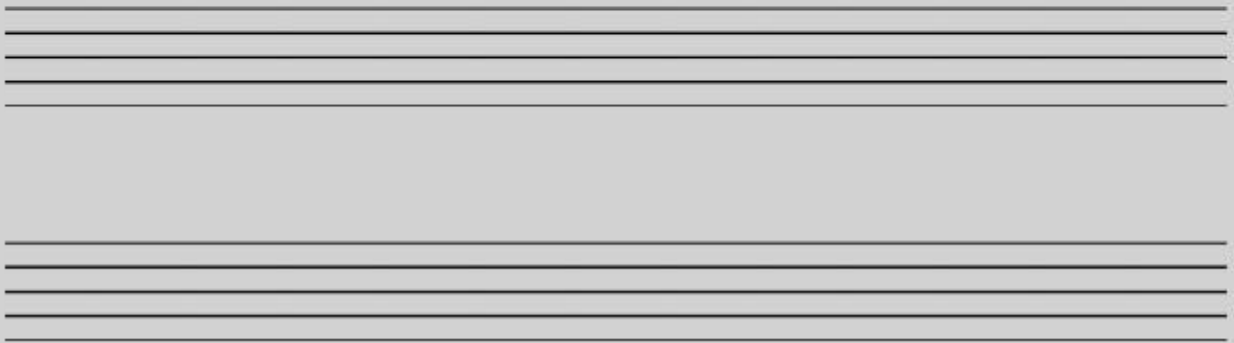


No Strings Attached

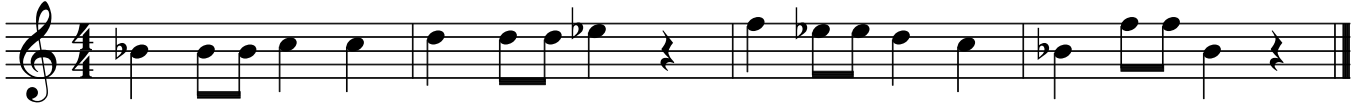


Student Composition

Notate and play a melody using eighth notes on counts 3 & 4. Be sure to include barlines, time signature and the correct clef for your instrument.



Eighth Note Patterns 2 & 1



Skip To My Lou



Mexican Mountain Song



Student Composition

Notate and play a melody using eighth notes on counts 2 & 1. Be sure to include barlines, time signature and the correct clef for your instrument.

Two sets of blank musical staves for student composition. Each set consists of a treble clef staff and a bass clef staff, both in 4/4 time signature. The staves are empty, ready for the student to write their own melody.

Twinkle, Twinkle Little Star



The image shows the musical notation for the song 'Twinkle, Twinkle Little Star'. It consists of three staves of music in treble clef, 2/4 time, and B-flat major. The melody is simple and repetitive, consisting of eighth and quarter notes.

Ode To Joy



The image shows the musical notation for the 'Ode to Joy' theme. It consists of two staves of music in treble clef, 4/4 time, and B-flat major. The melody is more complex, featuring eighth and sixteenth notes, and includes a repeat sign at the end of the second staff.

Twinkle, Twinkle Little Star was composed by _____ at age 3.
He composed music during the _____ period.
It has an _____ form.

Ode to Joy was composed by _____.
It was used by _____ as the theme to his Symphony No. 9.
He was a transitional composer between the _____ and _____ period.
It has an _____ form.