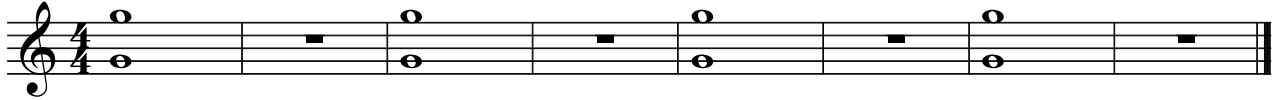
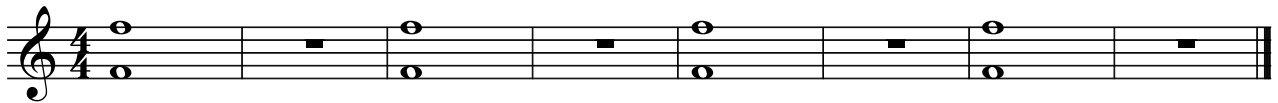


# Page A Day

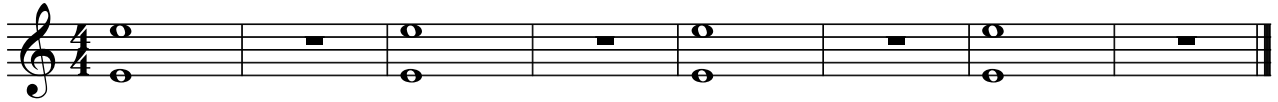
Syllable = \_\_\_\_\_



Syllable = \_\_\_\_\_



Syllable = \_\_\_\_\_





Syllable = \_\_\_\_\_





Syllable = \_\_\_\_\_



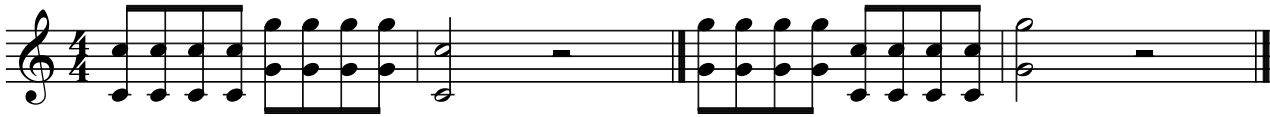
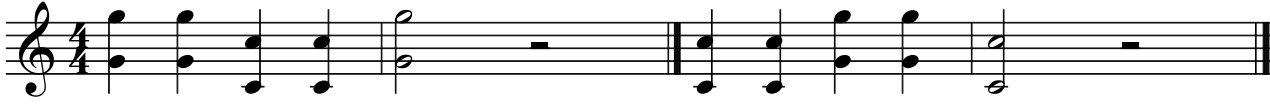
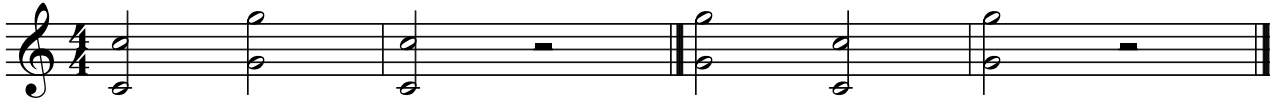
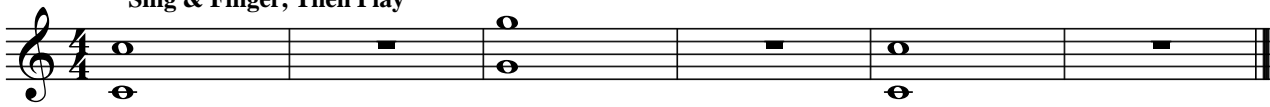
**4**/**4** = \_\_\_\_\_ Top # = \_\_\_\_\_ per \_\_\_\_\_  
Bottom # = \_\_\_\_\_ of note gets a \_\_\_\_\_

 = \_\_\_\_\_  = \_\_\_\_\_

They get \_\_\_\_\_ counts.

 = \_\_\_\_\_  = \_\_\_\_\_ ( \_\_\_\_\_ )

Sing & Finger, Then Play



 = \_\_\_\_\_

"Check yourself" →

Feet \_\_\_\_\_

 = \_\_\_\_\_

Bottom \_\_\_\_\_

They get \_\_\_\_\_ counts.

Eyes \_\_\_\_\_

If you are not playing, your instrument should be in the \_\_\_\_\_ position.



### Quarter Note Trios



*How many count air should you use?*

*How many count air here?*

### Quarter Note Trios With Space



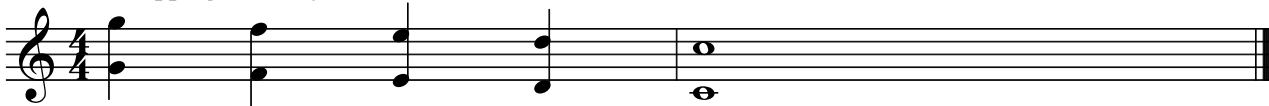
*Each note should bounce like a ball.*

### Stepping Down By Twos



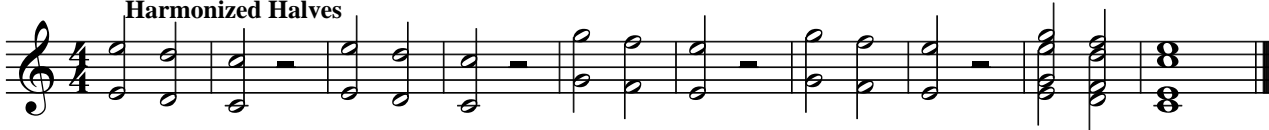
*Keep your air moving forward to the release.*

### Stepping Down By Ones



*Use quick fingers when changing notes.*

### Harmonized Halves



*Some players should play the top notes while others play the bottom notes.*

## Elements of Music

Melody = \_\_\_\_\_

Style = \_\_\_\_\_

Harmony = \_\_\_\_\_

Form = \_\_\_\_\_

Rhythm = \_\_\_\_\_

Expression = \_\_\_\_\_

Halfway Down The Scale



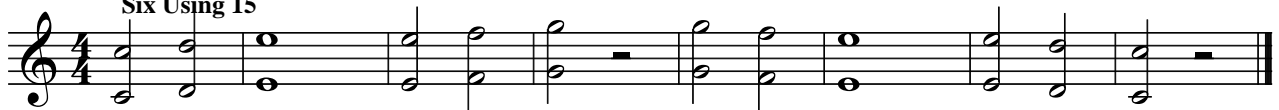
Inversion = Upside Down



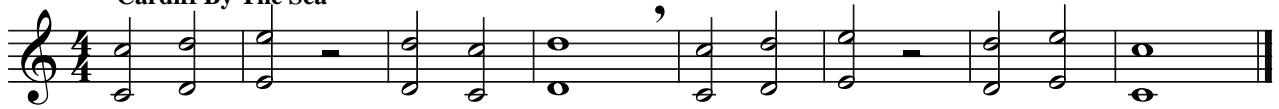
Down & Up



Six Using 15



Cardiff By The Sea



A \_\_\_\_\_ is complete musical idea. It is played in one \_\_\_\_\_.

\_\_\_\_\_ = Tone Color. It is the unique way something sounds.

We always want to have a beautiful sound on our instrument. List 3 adjectives describing correct tone color.

\_\_\_\_\_

\_\_\_\_\_

\_\_\_\_\_

Three Halves

Twisted Up

Quarter Time

Au Claire de la Lune

Down By The Station

The \_\_\_\_\_ is the steady clocklike pulse of a song.

The \_\_\_\_\_ is the speed of the \_\_\_\_\_.

\_\_\_\_\_ = fast

\_\_\_\_\_ = gradually speed up

\_\_\_\_\_ = medium

\_\_\_\_\_ = slow

\_\_\_\_\_ = gradually slow down

**Fun With Fa**

**More Fun With Fa**


**Fun With Sol**

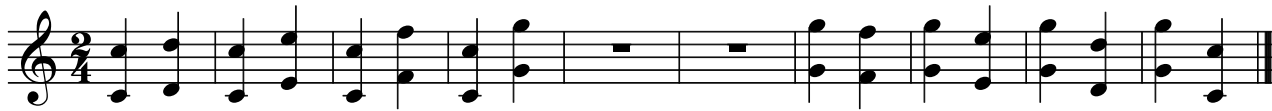
**More Fun With Sol**

A tie is a curved line that connects notes of the same pitch. They are played as one note.  
 A dot after a note or rest adds 1/2 the value.

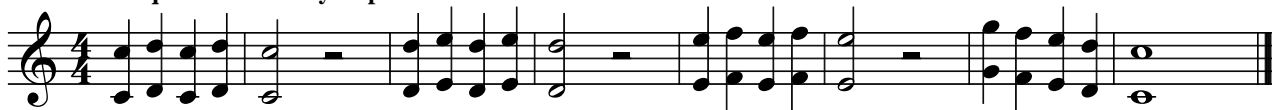
**Sol What?**

1 measure repeat      2 measure repeat      Pick one note to play.

% = \_\_\_\_\_      ♩ = \_\_\_\_\_  
 % = \_\_\_\_\_      ♪ = \_\_\_\_\_  
 . = next to a note \_\_\_\_\_ the value.      They get \_\_\_\_\_ a count.  
 = \_\_\_\_\_ - a curved line that connects notes of the same pitch.  
 They are played as one \_\_\_\_\_ note.



Sequence = Melody Repeated on a Different Note of the Scale



Mary Had A Little Lamb



 = \_\_\_\_\_

It gets \_\_\_\_\_ counts.

**2**  
**4**

= 2 \_\_\_\_\_ per \_\_\_\_\_.

= \_\_\_\_\_ notes get 1 beat.

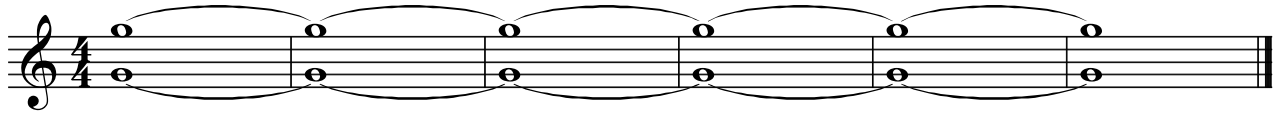


= \_\_\_\_\_ - a curved line that connects notes of different pitches.

They are played without \_\_\_\_\_.

\_\_\_\_\_ = a melody repeated on a different note of the scale.

Long Tone



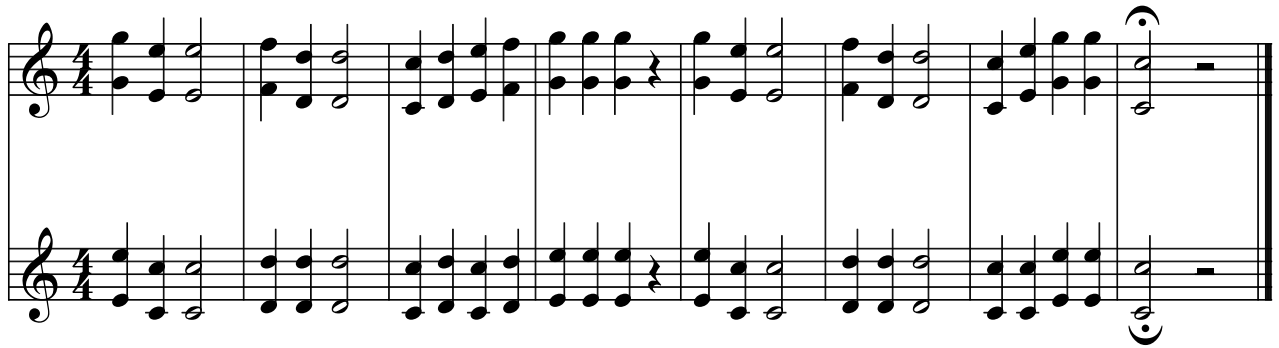
"Lung Buster" - Down The Scale In Just One Breath




How many count air should you use?



Lightly Row



 = \_\_\_\_\_ It means to \_\_\_\_\_ the note or rest longer.

The melody can move by \_\_\_\_\_, \_\_\_\_\_, \_\_\_\_\_.

\_\_\_\_\_ = beginning of a note.

\_\_\_\_\_ = middle of a note.

\_\_\_\_\_ = end of a note.

\_\_\_\_\_ = music with 2 parts or players.

Sequence #2



Good King Wenceslas



Song of the Fjords



Unfinished Melody



*Notate an ending for this song. Make sure you can play what you write.*

Scale Fun



## Patterns in Music

\_\_\_\_\_ = move up or down by step.

\_\_\_\_\_ = move up or down by skip.

\_\_\_\_\_ = play a passage again.

\_\_\_\_\_ = repeat a melody starting on a different note.

\_\_\_\_\_ = play flipped or upside down.

\_\_\_\_\_ = play backwards.

\_\_\_\_\_ = play backwards & flipped.



Fit To Be Tied



Ties & Slurs

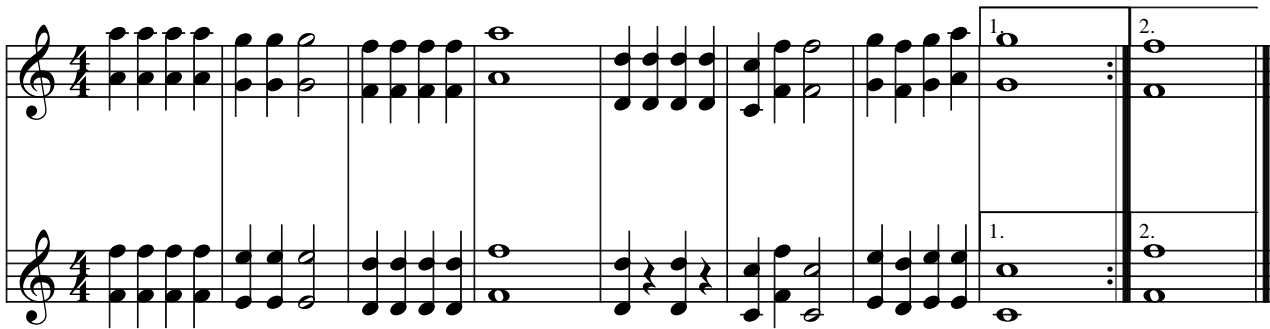


Add The Dot



Jolly Old St. Nicholas

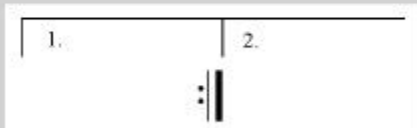
First & second endings



Clarinet players should \_\_\_\_\_ their first finger when playing "La" (A).

Brass players change \_\_\_\_\_ to play on different \_\_\_\_\_.

Your should change notes \_\_\_\_\_ even when the music moves slowly.



= first & second \_\_\_\_\_.

You \_\_\_\_\_ the first ending on the repeat, and play the \_\_\_\_\_ ending instead.

**Lung Buster #2**

A phrase is shown by a curved line over several notes. Phrases should be played in one breath.

**Roller Coaster Ride**

**Old MacDonald's Farm**

⌘

*Fine*

*D.S. al Fine*

\_\_\_\_\_ are shown by a curved line over several notes. They are to be played as one idea in one breath.

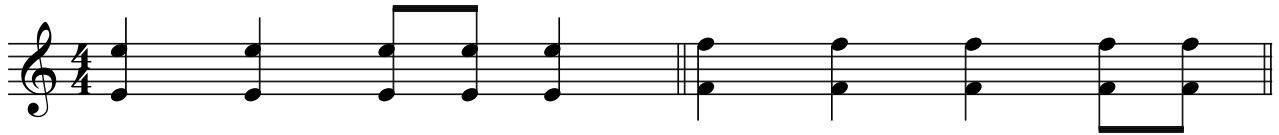
\_\_\_\_\_ = The end of a piece of music.

*D.S. al Fine* = \_\_\_\_\_ to the \_\_\_\_\_, then play to the \_\_\_\_\_.

⌘ = \_\_\_\_\_.



**Eighth Note Patterns 3 & 4**



**Jim Along Josie**

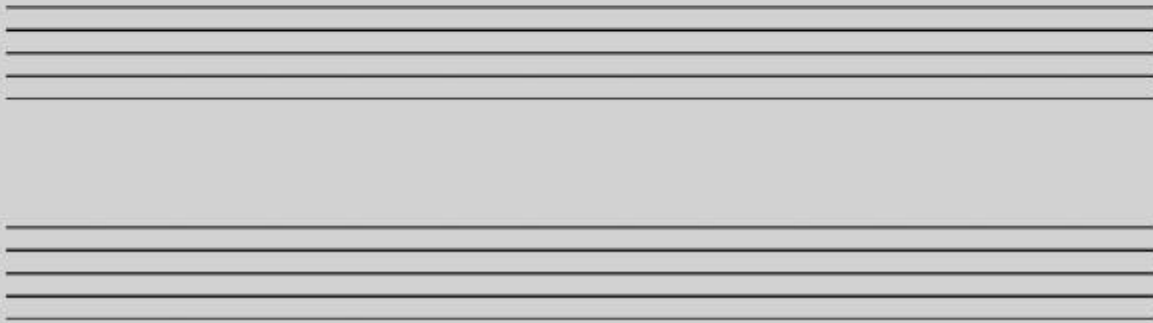


**No Strings Attached**

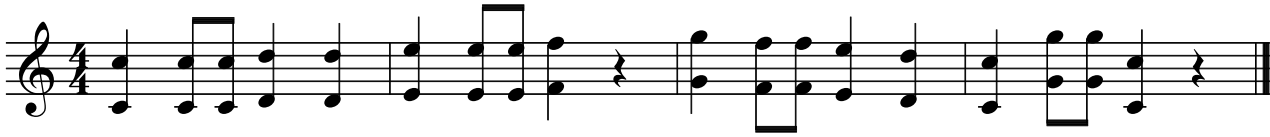


**Student Composition**

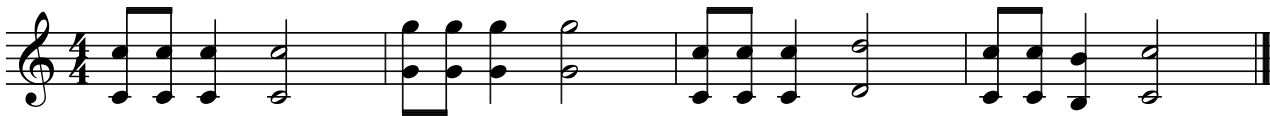
Notate and play a melody using eighth notes on counts 3 & 4. Be sure to include barlines, time signature and the correct clef for your instrument.



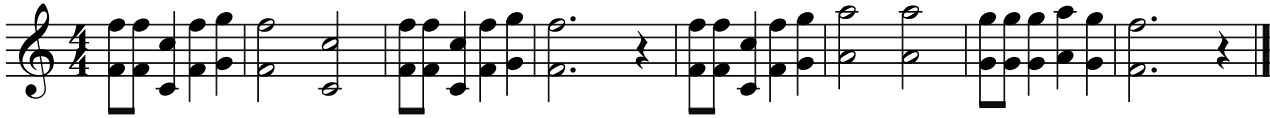
Eighth Note Patterns 2 & 1



Skip To My Lou

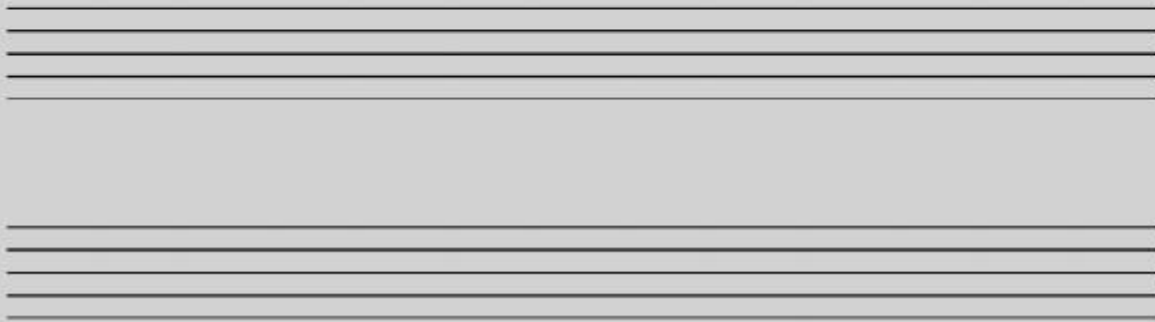


Mexican Mountain Song



## Student Composition

Notate and play a melody using eighth notes on counts 2 & 1. Be sure to include barlines, time signature and the correct clef for your instrument.



Twinkle, Twinkle Little Star



The musical score for 'Twinkle, Twinkle Little Star' is presented in three staves. The first staff begins with a treble clef and a 2/4 time signature. The melody is simple, consisting of eighth and quarter notes. The second and third staves continue the melody and include some chordal accompaniment with beamed eighth notes.

Ode To Joy



The musical score for 'Ode To Joy' is presented in two staves. The first staff begins with a treble clef and a 4/4 time signature. The melody is a continuous sequence of eighth notes, with some notes beamed together. The second staff continues the melody and includes some chordal accompaniment with beamed eighth notes.

*Twinkle, Twinkle Little Star* was composed by \_\_\_\_\_ at age 3.

He composed music during the \_\_\_\_\_ period.

It has an \_\_\_\_\_ form.

*Ode to Joy* was composed by \_\_\_\_\_.

It was used by \_\_\_\_\_ as the theme to his Symphony No. 9.

He was a transitional composer between the \_\_\_\_\_ and \_\_\_\_\_ period.

It has an \_\_\_\_\_ form.